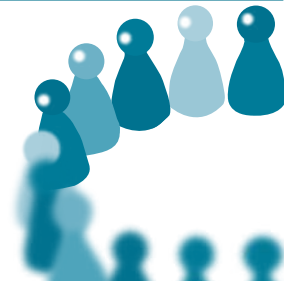


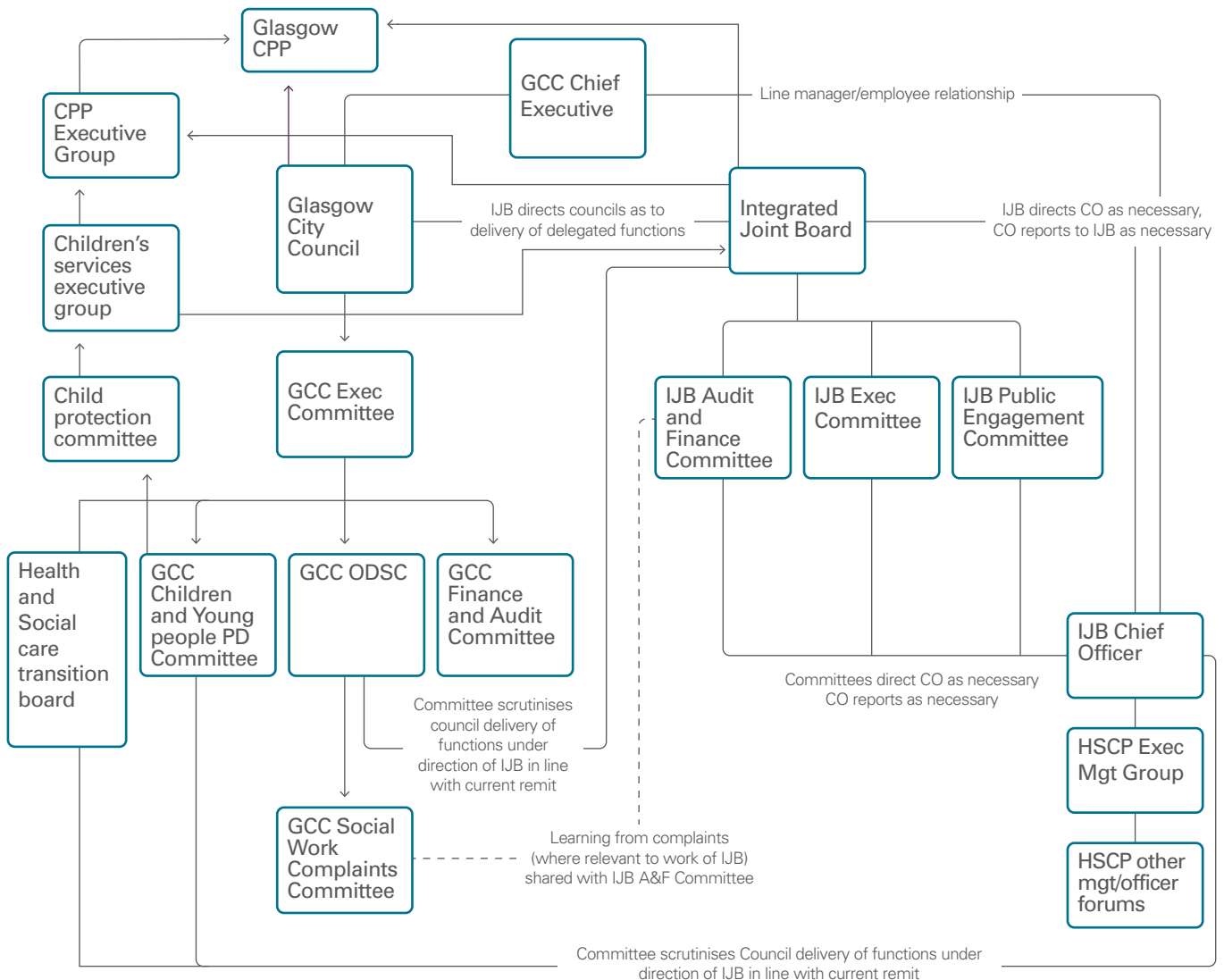
# Social work in Scotland

## Governance arrangements for councils and IJBs



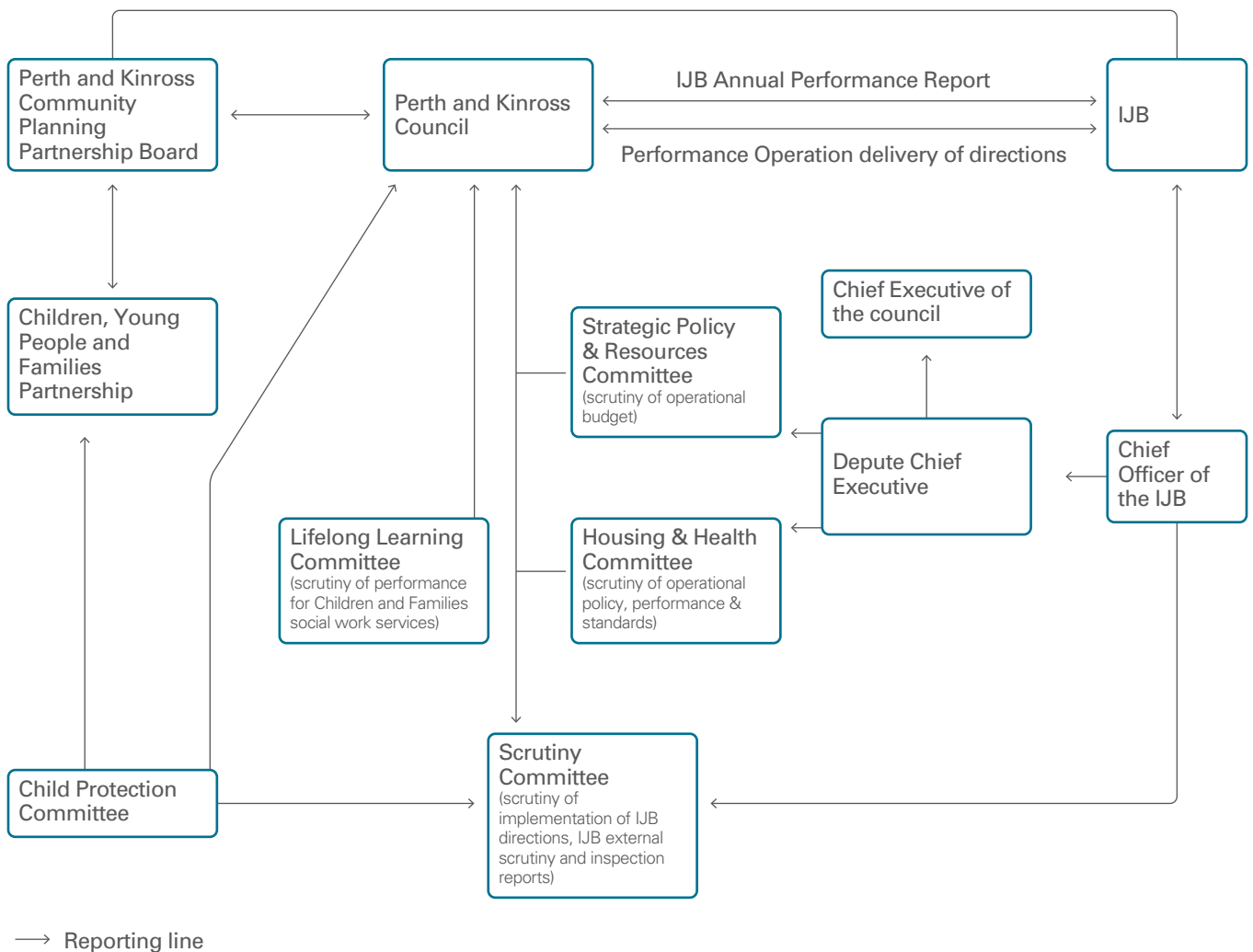
### Governance arrangements for Glasgow City Council (GCC) and IJB

- All three social work functions; adults, children and families, and criminal justice, are within the remit of the IJB.
- These arrangements are still an evolving picture.
- The IJB Audit and Finance Committee is responsible for monitoring the financial performance of the IJB and ensuring the performance is monitored against budget.
- Performance is scrutinised by the IJB.
- There are eight elected members on the IJB from a total of 79 elected members in GCC.
- The CSWO has professional leadership in the council and the IJB but line management remains with GCC and the council retains the statutory responsibility to appoint the CSWO.



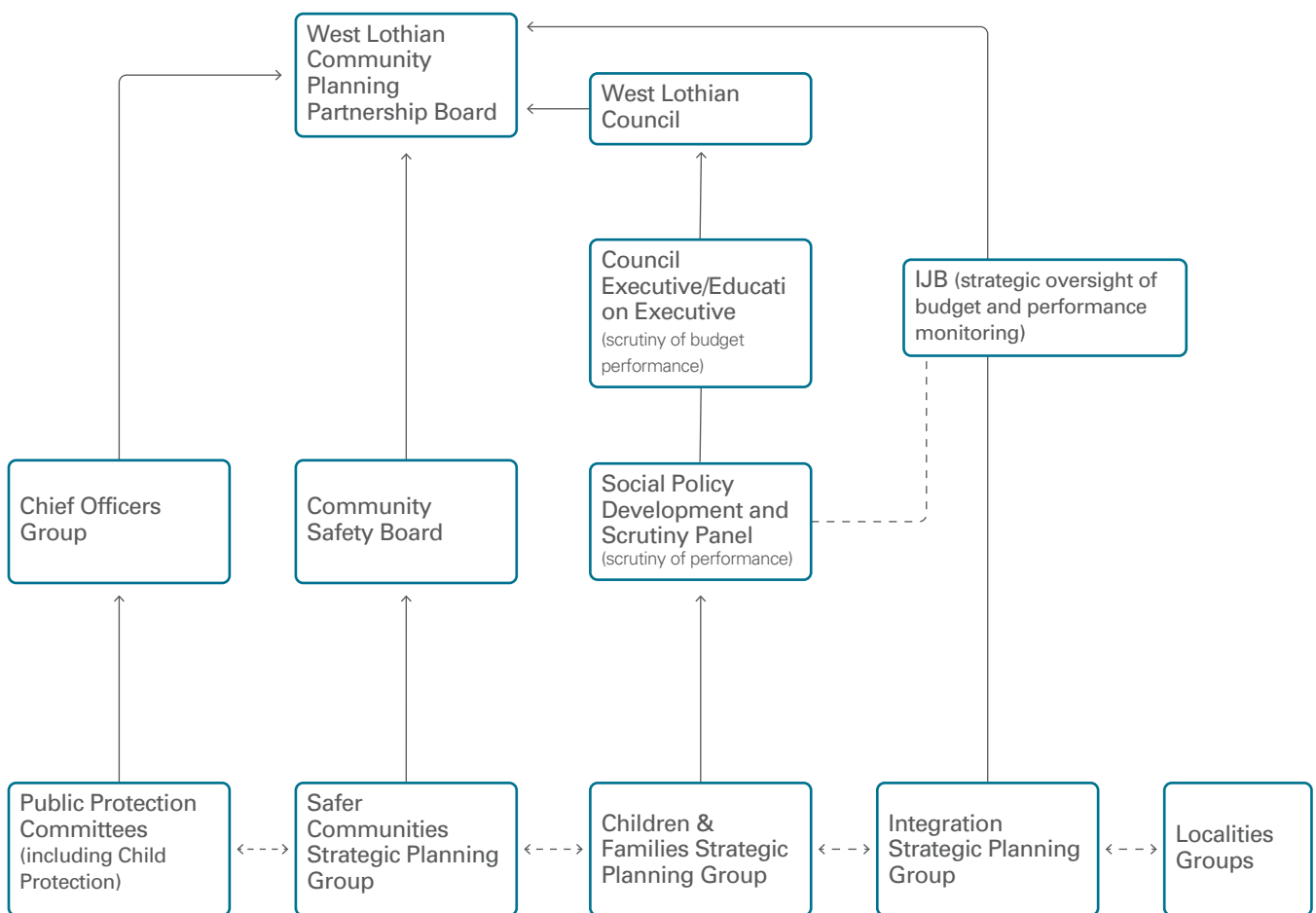
## Governance arrangements for Perth and Kinross Council and IJB

- Adult social services is integrated within the IJB. Responsibility for Children and Families, and Criminal Justice social work remains within the council.
- Four elected members (from a total of 41) sit on the IJB.
- Scrutiny of performance takes place at the Housing and Health Committee (HHC) for those social work functions (other than children’s services) which are not part of the Integration Scheme. The HHC Committee will also be responsible for scrutiny of performance of functions within the IJB. Scrutiny of social work services for Children and Families takes place at the Lifelong Learning Committee.
- Scrutiny of expenditure for all social work takes place at the Strategic Policy and Resources Committee.
- The CSWO has professional leadership in the council and the IJB but line management remains with Perth and Kinross Council.



## Governance arrangements for West Lothian Council and IJB

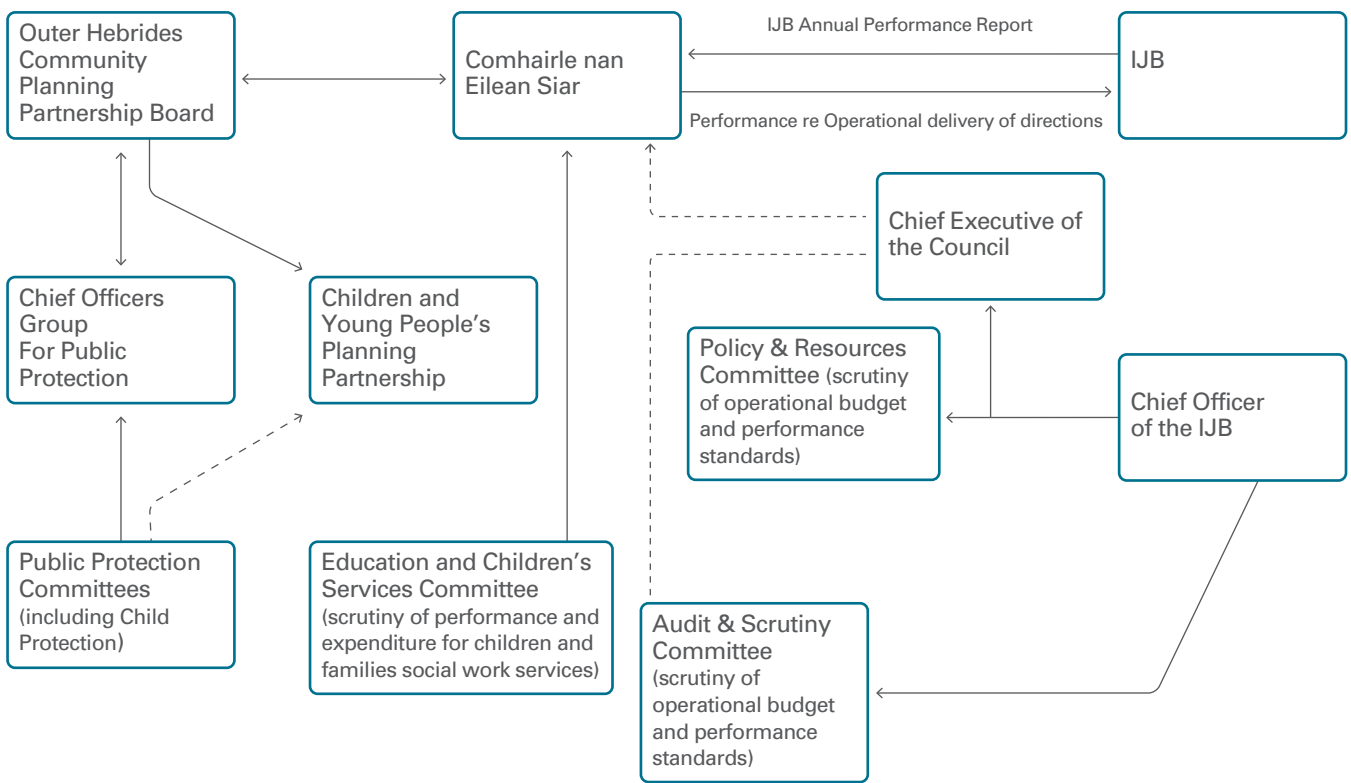
- Only adult social services are integrated within the IJB. Responsibility for Criminal Justice and Children and Families social work remains within the council.
- 4 elected members (from a total of 33) sit on the IJB.
- Scrutiny of performance takes place at the Social Policy Development and Scrutiny Panel. Performance reporting is also provided take the IJB for adult social care.
- Scrutiny of expenditure takes place at the Council Executive and IJB (for adult social care).
- The CSWO has professional leadership in the council and the IJB but line management remains with West Lothian Council.



- Reporting line
- - -> Agendas are compatible and linked but there is no formal governance process

## Governance arrangements for Comhairle nan Eilean Siar and IJB

- Adult social services and Criminal Justice are integrated within the IJB. Responsibility for Children and Families social work remains within the council.
- Four elected members (from a total of 31) sit on the IJB.
- Scrutiny of performance for services delivered under Direction from the IJB will take place at the Policy and Resources Committee for adult and criminal justice social work services. It takes place at the Education and Children’s Services Committee in respect to children’s social work services. The Comhairle reports to the IJB on operational delivery of Directions. The Comhairle itself will receive the Annual Report in relation to the IJB’s delivery of its Strategic Plan.
- Scrutiny of expenditure in relation to children’s services takes place at Education and Children’s Services Committee. The Comhairle identifies a sufficient budget for the services delivered under Direction (adult social services and Criminal/Community Justice) which it submits to the IJB to inform its budget setting. In the event that any “in year” proposal of the IJB cannot be contained within this allocation, the IJB may not consider the Proposal until the Comhairle has considered whether to agree to the expenditure.
- The CSWO has professional leadership for the delivery of all social work services whether or not delivered under Direction. Line management of individuals in adult social services may be by an NHS Employee subject to the professional safeguard just detailed.



→ Reporting line  
 - - -> Escalation option

## Aspects of the CSWO role in Glasgow City, Perth and Kinross, West Lothian Councils and Comhairle nan Eilean Siar

	Tier	Reports to	Corporate Management Team	Committees and other forums attended
Glasgow City Council	2	Chief Officer, Glasgow City Health and Social Care Partnership	Attends corporate management team as required and also attends, and is a member of, the extended corporate management team	IJB, IJB Executive Committee, IJB Public Engagement Committee. Council Executive Committee, Operational Delivery Scrutiny Committee, Health and Social Care Transition Board.  The National CSWO's Group.
Perth and Kinross Council	2	Deputy Chief Executive	Attends corporate management team	The IJB as a non-voting member providing professional advice. Housing and Health Committee, Scrutiny Committee, Community Safety Committee, Strategic Policy and Resources Committee, Full Council.  Tayside Alcohol and Drug Partnership Coordinating Group.
West Lothian Council	2	Deputy Chief Executive	Attends corporate management team	Full Council meetings as required, Council Executive meetings, Council's Executive Management Team as required, Social Policy, Policy Development and Scrutiny Panel, Health and Care Policy Development and Scrutiny Panel.  Also attends or is represented on the following: <ul style="list-style-type: none"> <li>• Modernisation Board</li> <li>• Integration Joint Board</li> <li>• West Lothian Integration Strategic Planning Group</li> <li>• West Lothian Health and Social Care Partnership Senior Management Team</li> <li>• West Lothian Health and Social Care Partnership Board</li> <li>• Safer Communities Strategic Planning Group</li> <li>• Children and Families Strategic Planning Group</li> <li>• Community Justice Authority Board</li> <li>• Protection of Vulnerable Groups (PVG) Referral Panel</li> <li>• Chief Officers Group</li> <li>• Public Protection Committee</li> <li>• Edinburgh, Lothian and Scottish Borders Strategic Oversight Group</li> </ul>

	Tier	Reports to	Corporate Management Team	Committees and other forums attended
Comhairle nan Eilean Siar	2	Director of Education and Children's Services	Attends corporate management team	Environment and Protective Services Committee, Health and Social Care Committee, Education and Children's Services Committee, Policy and Resources Committee.  Also attends, Outer Hebrides Child Protection Committee, Outer Hebrides Community Planning Partnership, Integrated Children's Services Planning Group.



Audit Scotland, 4th Floor, 102 West Port, Edinburgh EH3 9DN

T: 0131 625 1500 E: [info@audit-scotland.gov.uk](mailto:info@audit-scotland.gov.uk) 

[www.audit-scotland.gov.uk](http://www.audit-scotland.gov.uk) 

For the latest news, reports and updates, follow us on:

